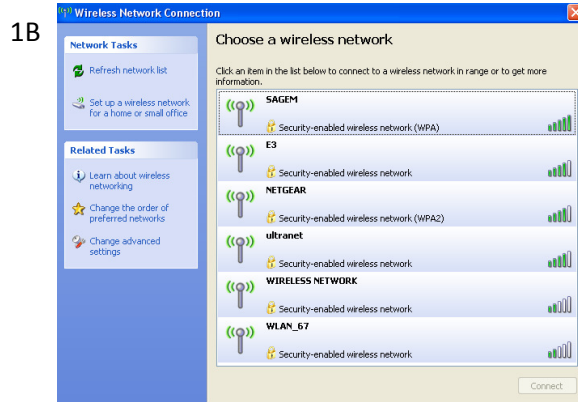
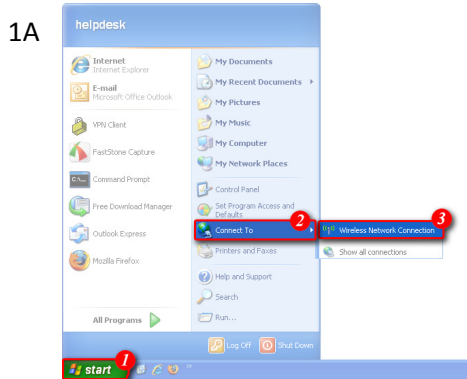


## Connect to wireless with XP

First of all click on your Start Button and click on Connect To. As shown in diagram 1A. From here, click Wireless Network Connection and you will have the screen shown below (1B).



From Screen 1B, find your network. It should be called TP LINK. Once you have located this network, click on the name and highlight it. Then click connect in the bottom right and you will receive a screen asking for the wireless security key. Type the key in here (see the top of the guide for this key) and then confirm it in the confirmation box. Once done, click Connect. After a few minutes you will be told that the connection was successful. Close the box and you are now wirelessly connected.